



# PRINTEKMOBILE™

Everywhere. Every way. Every time.

## Fast, and Ruggedized Simplicity.

PrintekMobile FieldPro 530 printers help to improve operations and productivity while on the road, out in the field, or at a customer site. It's small and ruggedized design was engineered to create crisp, professional-looking receipts, tickets, and field sales documents automatically and reliably.

## FieldPro 530

The FieldPro 530 is compact, lightweight, extremely fast, and your best choice for 3" receipt and ticket printing.

It's advanced printer design makes it perfect for all 3" receipt, work order, or ticket printing needs. The FieldPro 530 printers are available in cabled, Bluetooth®, and Wi-Fi versions.



## Powerful, compact productivity.

The FieldPro 530 printer is smaller, lighter, faster, and more feature rich than competitive models. Many of the advanced features that make up this rugged mobile printer will help your mobile workforce become more productive.

- Easy-to-read control face and simple drop-in paper loading.
- The 530 quickly prints a wide variety of tickets, and receipts.
- IP54 rated for water and dust resistance... plus rated for repeated 6-foot drops to concrete.
- Print speeds up to 5 ips from the moment you press the print command.
- Extensive fonts, character sets, bar codes and graphic capabilities.
- Printer configuration is quick and easy with a web based interface..
- The latest in battery technology provides for full-shift printing in all modes.
- Compatible with Windows, Windows Mobile, Apple iOS, and Android.
- Emulations that allow the printer to be a drop-in replacement for any mobile printer.

## Leadership that leads the way.

For over 35 years, Printek has fulfilled the business printing needs of organizations worldwide. We've led the industry with mobile printers designed to improve productivity and increase ROI. And they include PrintekMobile's unparalleled level of customer support. Our clients say it's the best in the industry. So why not join them, and find out for yourself.



[www.printek.com](http://www.printek.com)

# Detailed Printer Specifications

## FieldPro 530



### Printing Specifications

Printing Method: Direct thermal.  
Printing Resolution: 203 dpi (8 dots per mm).  
Printing Speed: Up to 5 ips.  
Printing Width: Up to 2.8 inches (72 mm).  
Paper Width: Up to 3.125 inches (80mm).

### Fonts/Characters/Bar Codes

Fonts: Virtually all TrueType fonts, from 6 cpi to 34 cpi depending on emulation chosen, plus scaling.  
International Characters: Most common sets available. Unicode support.  
Bar Codes: Virtually all 1D and 2D codes supported, depending on emulation chosen.  
Downloadable firmware, fonts, graphics, and logos.

### Connectivity

Standard (All Units): USB 2.0 PNP.

Wireless Options:

#### Bluetooth®

Complete Bluetooth® Stack including:

Protocols: L2CAP, RFCOMM, SDP

Profiles: GAP, SDAP, SPP, BTLE

Class 2 Operation

RFC2217 & EN60601 compliant

Wi-Fi 802.11b/g/n compatible

**Universal Port:** Data and power port - allows connection of external devices such as MCR, barcode scanners, biometrics, RFID.

### Software

Drivers and Utilities: Drivers for XP, WIN 7, WIN 8. Compatible with Windows CE/Pocket PC, Windows Mobile, Apple iOS, Android. Print utilities and SDK's for all platforms. Native App and Web printing.

Printer Setup Program provides convenient configuration via a Web interface from any host (tablets and smartphones included).

Emulations: Emulates many popular printer brands and languages including: O'Neil, Zebra CPCL and ZPL, Exttech, IPL, and ESC POS. Firmware can be upgraded as new emulations become available.

Supports direct printing of Postscript, PDF, PBM, JPG, PNG, BMP, SVG, & TIFF files.

### Print Media

Paper Type: Direct Thermal Roll.

Roll Size: Maximum roll diameter 2.0" (51 mm), roll widths up to 3.125" (80 mm).

Roll Capacity: Approx. 105' (32 m), creating 210 6" long receipts (with 2.0 mil thick media).

Core Size: 0.75" Recommended (19 mm).

### Power Management

Battery: Rechargeable 3 cell Lithium Ion, (11.3 V, 2950 mAh, 33.2 Wh).

Endurance: Over 3,500 printed inches per charge.

Recharging: 2 hours, via on-board charger, or optional external chargers.

Power Option: 100-240 VAC wall adapter, or 12-24 VDC in-vehicle adapter. When plugged in, the printer can be used while recharging the battery or can be run without the battery (print & charge adapter).

### Physical Specifications

L x W x H: 6.1" x 4.6" x 2.7" (15.5 x 11.7 x 6.9 cm).

Weight: 24 ounces (.68 kg) with battery.

### Environmental Specifications

Operating Temp: 0° to 122°F (-18° to 50°C).

Storage Temp: -4° to 140°F (-20° to 60°C).

Humidity: 10% to 90% RH (non-condensing).

Rated IP54 per IEC 529

### Operator Controls and Indicators

3 LED indicators for general fault, wireless connection/power and battery status indication. Buttons for power and paper feed.

Sensors for paper out, black mark detection, and door open. "Gas gauge" on battery door.

### Memory Capacity

256 MB Flash, 512 MB DDR2. Standard memory supports large and graphic intensive print jobs.

### Durability and Reliability

Survives multiple 6 foot drops to concrete (each face) per IEC 68-2.

MTBF: 10,000 hours in normal use.

### Regulatory Approvals

FCC Class B, CE mark, RoHS, UL listed AC adapters, e-mark.

### Warranty

2-year printer warranty on the entire printer—case and print head included. 1-year warranty on the battery.

### Options and Accessories

- Universal Port, 3-Track Simultaneous Read MCR, barcode scanners, biometrics, RFID.
- AC Wall Adapter, 100 to 240 VAC
  - Print and charge version
  - Charge only version
- In-Vehicle Power Adapter, 12 to 24 VDC
- Shoulder Strap
- Data Cables; USB
- Spare Batteries in Multi-Packs
- Media in Case Quantities
- Popular Mounting Systems
  - In-Vehicle Systems
  - Cart Mounting Systems
  - Fixed Mounting Systems



**PrintekMobile's comprehensive warranty covers the entire printer ... even the battery!**

1517 Townline Rd. Benton Harbor, Michigan 49022 | T: 1.888.211.3400

F: 269.925.8539 | E: info@printek.com | www.printek.com

©2015 Printek, Inc. Specifications subject to change without notification.



**PRINTEKMOBILE™**  
Everywhere. Every way. Every time.

www.printek.com



# PRINTEKMOBILE™

Everywhere. Every way. Every time.

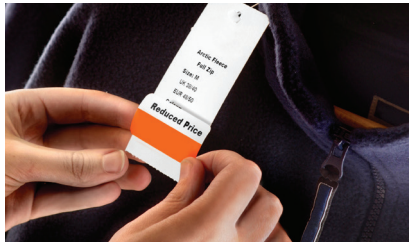
## Light, Fast, and Rugged.

PrintekMobile FieldPro 530L printers help to improve operations and productivity throughout the warehouse, retail sales floor, on the road, or at a customer site. The 530L is engineered to create crisp, professional-looking labels, receipts, tickets, and field sales documents automatically and reliably.

## FieldPro 530L

The FieldPro 530L is compact, lightweight, extremely fast, and your best choice for 3" label and receipt printing.

It's advanced printer design makes it perfect for all 3" receipt, work order, labels or ticket printing needs. The FieldPro 530L printers are available in cabled, Bluetooth®, and Wi-Fi versions.



## Powerful, compact productivity.

The FieldPro 530L printer is smaller, lighter, faster, and more feature rich than competitive models. Many of the advanced features that make up this rugged mobile printer will help your mobile workforce become more productive.

- Easy-to-read control face and simple drop-in paper loading.
- The 530L quickly prints a wide variety of labels, tickets, and receipts.
- IP54 rated for water and dust resistance... plus rated for repeated 6-foot drops to concrete.
- Print speeds up to 5 ips from the moment you press the print command.
- Extensive fonts, character sets, bar codes and graphic capabilities.
- Printer configuration is quick and easy with a web based interface..
- The latest in battery technology provides for full-shift printing in all modes.
- Compatible with Windows, Windows Mobile, Apple iOS, and Android.
- Emulations that allow the printer to be a drop-in replacement for any mobile printer.

## Leadership that leads the way.

For over 35 years, Printek has fulfilled the business printing needs of organizations worldwide. We've led the industry with mobile printers designed to improve productivity and increase ROI. And they include PrintekMobile's unparalleled level of customer support. Our clients say it's the best in the industry. So why not join them, and find out for yourself.



[www.printek.com](http://www.printek.com)

# Detailed Printer Specifications

## FieldPro 530L



### Printing Specifications

Printing Method: Direct thermal.  
Printing Resolution: 203 dpi (8 dots per mm).  
Printing Speed: Up to 5 ips.  
Printing Width: Up to 2.8 inches (72 mm).  
Paper Width: Up to 3.125 inches (80mm).

### Fonts/Characters/Bar Codes

Fonts: Virtually all TrueType fonts, from 6 cpi to 34 cpi depending on emulation chosen, plus scaling.  
International Characters: Most common sets available. Unicode support.  
Bar Codes: Virtually all 1D and 2D codes supported, depending on emulation chosen.  
Downloadable firmware, fonts, graphics, and logos.

### Connectivity

Standard (All Units): USB 2.0 PNP.

Wireless Options:

#### Bluetooth®

Complete Bluetooth® Stack including:

Protocols: L2CAP, RFCOMM, SDP

Profiles: GAP, SDAP, SPP, BTLE

Class 2 Operation

RFC2217 & EN60601 compliant

#### Wi-Fi 802.11b/g/n compatible

**Universal Port:** Data and power port - allows connection of external devices such as MCR, barcode scanners, biometrics, RFID.

### Software

Drivers and Utilities: Drivers for XP, WIN 7, WIN 8. Compatible with Windows CE/Pocket PC, Windows Mobile, Apple iOS, Android. Print utilities and SDK's for all platforms. Native App and Web printing.

Printer Setup Program provides convenient configuration via a Web interface from any host (tablets and smartphones included).

Emulations: Emulates many popular printer brands and languages including: O'Neil, Zebra CPCL and ZPL, Exttech, IPL, and ESC POS. Firmware can be upgraded as new emulations become available.

Supports direct printing of Postscript, PDF, PBM, JPG, PNG, BMP, SVG, & TIFF files.

### Print Media

Paper Type: Direct Thermal Roll.

Roll Size: Maximum roll diameter 2.0" (51 mm), roll widths up to 3.125" (80 mm).

Roll Capacity: Approx. 75' (23 m), creating 220 4" long receipts (with 5.5 mil thick media).

Core Size: 0.75" Recommended (19 mm).

### Power Management

Battery: Rechargeable 3 cell Lithium Ion, (11.3 V, 2950 mAh, 33.2 Wh).

Endurance: Over 3,500 printed inches per charge.

Recharging: 2 hours, via on-board charger, or optional external chargers.

Power Option: 100-240 VAC wall adapter, or 12-24 VDC in-vehicle adapter. When plugged in, the printer can be used while recharging the battery or can be run without the battery (print & charge adapter).

### Physical Specifications

L x W x H: 6.1" x 4.6" x 3.1" (15.5 x 11.7 x 7.9 cm).

Weight: 24 ounces (.68 kg) with battery.

### Environmental Specifications

Operating Temp: 0° to 122°F (-18° to 50°C).

Storage Temp: -4° to 140°F (-20° to 60°C).

Humidity: 10% to 90% RH (non-condensing).

Rated IP54 per IEC 529

### Operator Controls and Indicators

3 LED indicators for general fault, wireless connection/power and battery status indication. Buttons for power and paper feed.

Sensors for paper out, black mark detection, and door open. "Gas gauge" on battery door.

### Memory Capacity

256 MB Flash, 512 MB DDR2. Standard memory supports large and graphic intensive print jobs.

### Durability and Reliability

Survives multiple 6 foot drops to concrete (each face) per IEC 68-2.

MTBF: 10,000 hours in normal use.

### Regulatory Approvals

FCC Class B, CE mark, RoHS, UL listed AC adapters, e-mark.

### Warranty

2-year printer warranty on the entire printer—case and print head included. 1-year warranty on the battery.

### Options and Accessories

- Universal Port, 3-Track Simultaneous Read MCR, barcode scanners, biometrics, RFID.
- AC Wall Adapter, 100 to 240 VAC
  - Print and charge version
  - Charge only version
- In-Vehicle Power Adapter, 12 to 24 VDC
- Shoulder Strap
- Data Cables; USB
- Spare Batteries in Multi-Packs
- Media in Case Quantities
- Popular Mounting Systems
  - In-Vehicle Systems
  - Cart Mounting Systems
  - Fixed Mounting Systems



**PrintekMobile's comprehensive warranty covers the entire printer ... even the battery!**

1517 Townline Rd. Benton Harbor, Michigan 49022 | T: 1.888.211.3400

F: 269.925.8539 | E: info@printek.com | www.printek.com

©2015 Printek, Inc. Specifications subject to change without notification.



**PRINTEKMOBILE™**  
Everywhere. Everyway. Everytime.

www.printek.com